

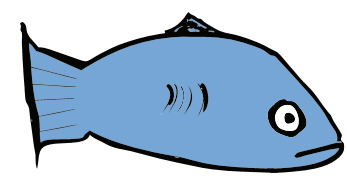
# Multiple Spellings - Consonants

/d/



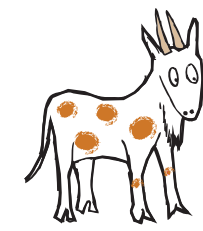
d dog  
-ed sailed

/f/



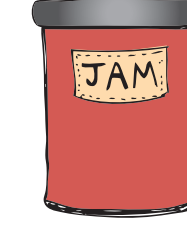
f fish  
ph phone  
-gh laugh

/g/



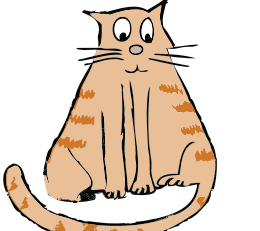
g goat  
gh ghost  
-gue league

/j/



j jam  
g gem  
-dge judge

/k/



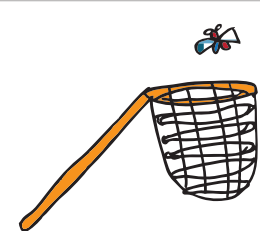
c cat  
k kite  
-ck duck  
ch school  
-que antique

/m/



m man  
-mb lamb  
-mn autumn

/n/



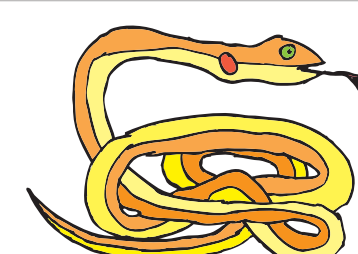
n net  
kn knight  
gn gnome

/r/



r rat  
wr write

/s/



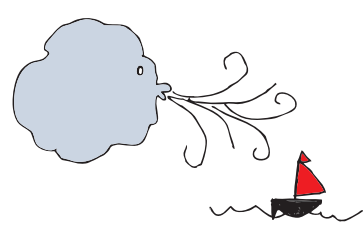
s snake  
c centre  
sc science

/t/



t top  
-ed jumped

/w/



w wind  
wh whale  
u queen

/z/



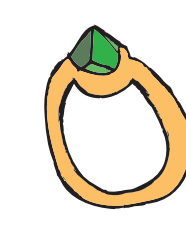
z zebra  
s nose

/ch/



ch church  
-tch witch

/ng/



n rink  
-ng ring

/sh/



sh ship  
ch chef