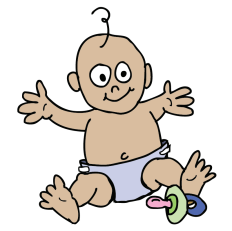


Phoneme Families



/ā/



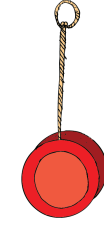
a baby
a-e cake
ai rain
ay hay
ei vein
ea steak
ey they

/ē/



e me
ee feet
ea sea
y happy
e-e Pete
ie piece
ei ceiling
ey key

/ō/



o yoyo
o-e bone
ow snow
oa boat
oe toe

/ōō/



u lupin
oo goose
u-e rule
ou soup
ew chew
ue blue
ui suit

/ōō/



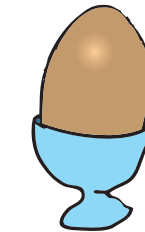
u push
oo book

/ī/



i hi
i-e hive
y fly
ie pie
igh light
y-e type

/ě/



e egg
ea feather

/ū/



u music
u-e mule
ue cue
ew pew
eu feud

/ǔ/



u up
o mother
ou touch

/ər/



er fern
ir bird
ur fur
ear earth
-or* doctor
-ar* collar

/er/



air chair
ear pear
are hare

* unstressed syllable

